



Exact Emerge User Guide:
Large Common Edible Bean
EE Bowl

(LRG Kidney, Pinto, Chickpea, Cranberry, etc...)

Medium Common Edible
Bean EE Bowl

(Med Green snap, Lima, Black, Navy, etc...)

Small Common Edible Bean
EE Bowl

(Sm Green Snap, Edamame, Black Turtle , etc...)

A128431 – 48 Hole LRG EE Bowl

A92778 – 64 Hole Med EE Bowl

A126064 – 64 Hole SML EE Bowl

AA103634 – 6 Tine KO Wheel

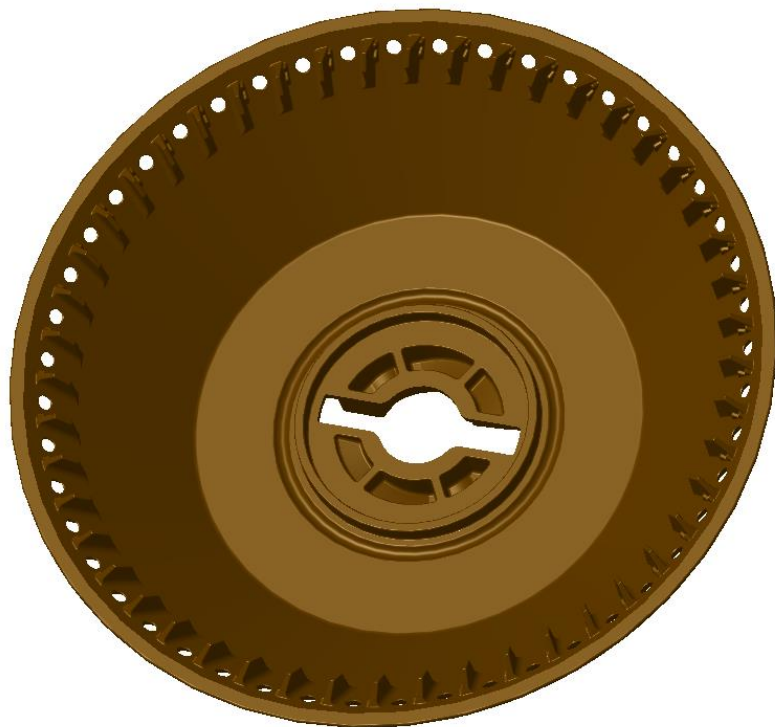
AA85924 – 8 Tine KO Wheel



JOHN DEERE

Large Common Edible Beans

- ❑ A128431 - ExactEmerge LRG Edible Bean Bowl - 48 Holes X 4.75mm
- ❑ AA103634 - ExactEmerge 6 Tine KO Wheel
- ❑ A127977 - Inner DE Base (Removed Baffle)



Installation – Kidney Bean Compared to Disk

- ❑ Kidney bean (950 seed/lb)
relative to hole and paddle



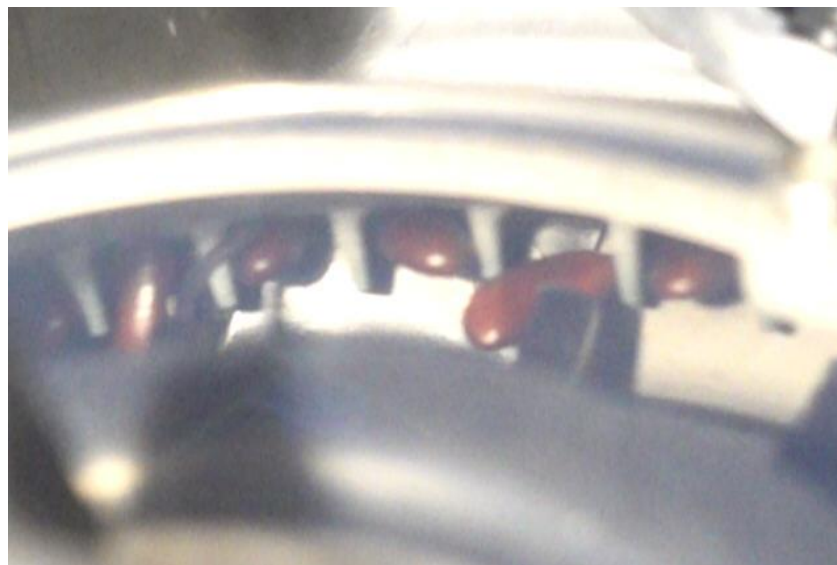
Installation – Set up

- ❑ Remove Inner DE to replace with A127977



Installation – Reason for Inner DE Removal

- ❑ If Inner DE baffle portion is not removed; it may cause seed damage and skips

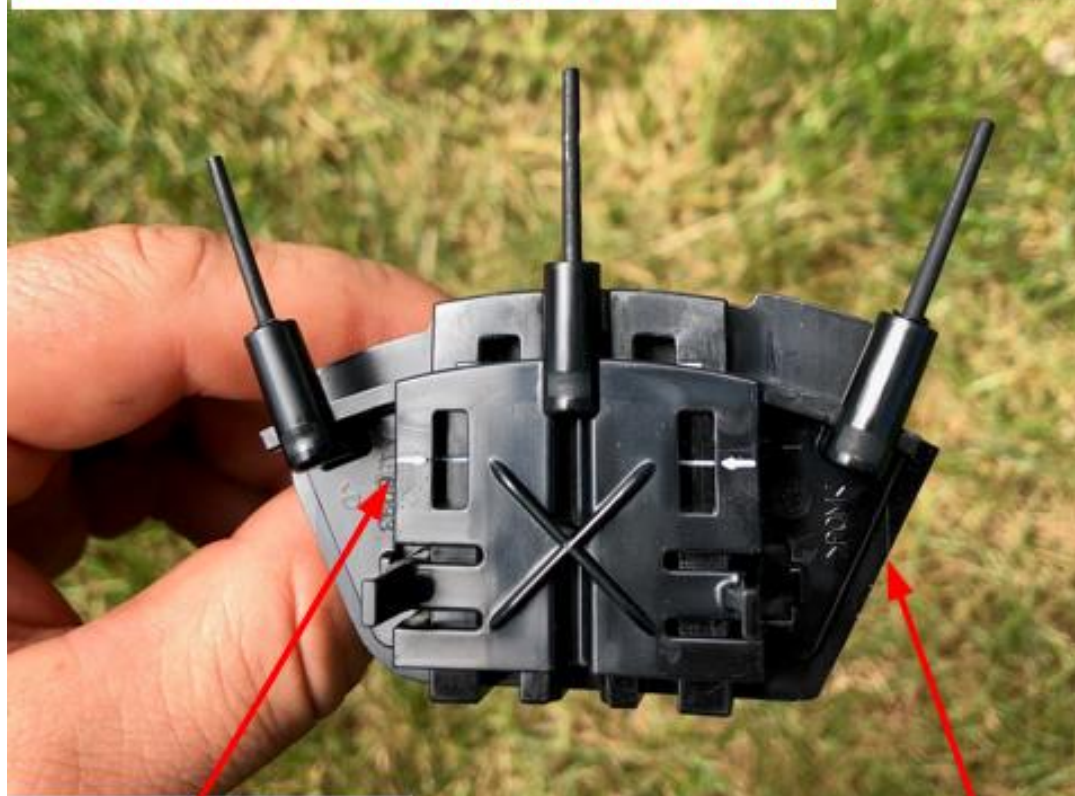


It is recommended that you use A127977 Inner DE Base.

Installation – Setup and Modifications

- ❑ The Inner DE Base A103700 must be swapped with A127977.
- ❑ Slide Inner DE to Disengaged position to make it less aggressive.
- ❑ If vacuum requirement is too high (>28 with skips), the brush outer DE - AA81457 may be used
- ❑ Install yellow soybean smooth strip - AA83215
- ❑ Brushbelt A98765 is recommended

A127977 - Inner DE Base (Removed Baffle)



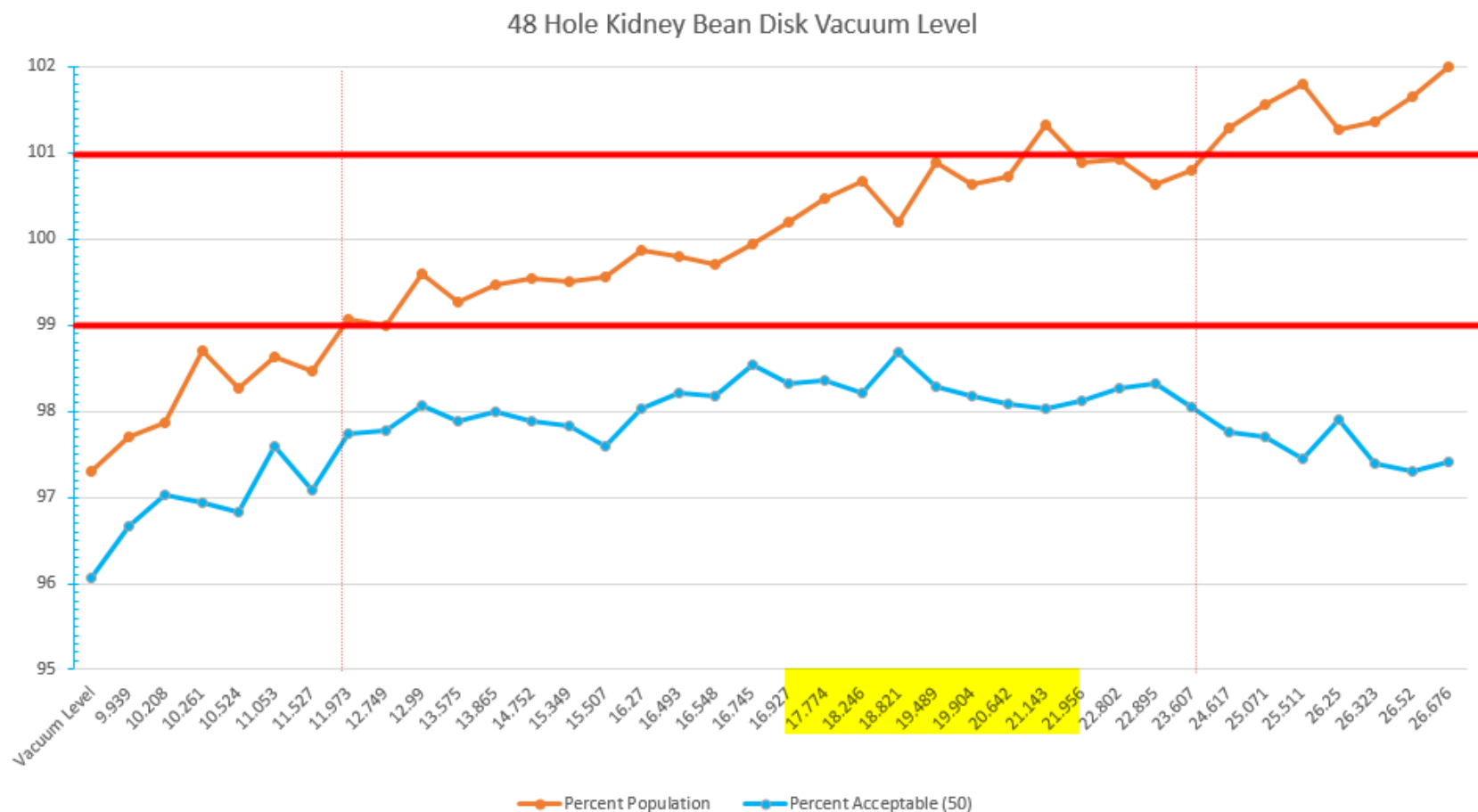
Set Inner DE to Disengaged Position

Removed Baffle Portion on Inner DE Base



Installation – Vacuum Recommendations

- Recommend approximately 18-22" of H2O for about 950 seed.lb Kidney Beans



Small Edible Beans – A126064 (64 Holes X 3.3mm)



Set up Recommendations

Common Edible Beans Meter Setup Recommendations

Seed Bowl	A92778	A128431	A126064
5 Tine Double Eliminator	AA86138	AA86138	AA86138
3 Tine Double Eliminator	AA86130	AA86130	AA86130
Inner DE Base	A127977	A127977	A127977
3 Tine Double Eliminator Position	Disengaged	Disengaged	Disengaged
Meter Strip	AA83215	AA83215	AA83215
BrushBelt	A98765	A98765	A98765
Knockout Wheel Assembly	AA85925	AA106419	AA85925
Seed Size (sds/lb)			
<1200	NR*	25 +/- 5	NR*
1200 - 1900	20 +/- 6	NR*	NR*
>1900	NR*	NR*	16 +/- 6

*Not recommended for optimal performance

1. If vacuum requirement is too high for large edible; may need AA81457 - Brush Outer DE
2. Planter width, seed size, population, speed & CCS splitters are issues in CCS delivery of edible beans
3. Recommend performing mobile planter runoff utilizing CCS delivery system to confirm settings
4. In very large kidney bean applications; for example, Garbonzo beans, hub height may need to be backed out to lessen aggressiveness of the inner double eliminator.
5. MY22 SS4 software has been updated to include Common Edible Beans crop description.

Troubleshooting

- ❑ High % Skips / Low Population:
 1. Ensure 6 tine KO wheel is properly installed
 2. Ensure Inner DE Base A127977 (removed Baffle) is installed
 3. Ensure smooth strip (Yellow) is installed
 4. Increase Vacuum up to Max of 30" of H2O if needed
 5. Place Inner DE to Disengaged Soybean position (Reduced Aggressiveness)
 6. Inspect bowl for possible broken paddle(s)
 7. Loosen hub height slightly
 8. Install Brush Outer DE
- ❑ Trouble Keeping Mini-Hopper Filled
 1. Ensure recommended amount of 80/20 is evenly coating seed (especially w/ high humidity & sticky treatment)
 2. Increase CCS pressure; start with 18-20" H2O
 3. Slow down DB44 runs well up to 7mph; DB66/88 runs well up to 4.5/5mph
 - Speed depends on the ability to keep the mini-hopper full via CCS
- ❑ High % Doubles / High Population:
 1. Reduce Vacuum
 2. Place Inner DE to -1 or Nominal Position (Increased Aggressiveness)
 3. If seed size is smaller than 1200-1400 seed/lb; may need seed bowl A92778 (64 Hole X 4.35mm)
 1. A128431 is intended for LRG Edible Beans >1200 seed/lb or larger.
- ❑ Broken Paddle?
 1. Replace w/ new bowl; have dealer enter in a DTAC case.





JOHN DEERE